

# Retaining and fence system STAVOBLOCK

Catalog sheet

Number of sheet : 07

<b>Producer</b>	STAVOBLOCK system, s.r.o. Lezník u Poličky, Czech Republic
<b>Norm</b>	PN 12001, ČSN ISO 9001, CCMS 12833-R, esr 1235, bba 01/4148 esr 4797
<b>Material</b>	Vibrated concrete classes of C 16/20 - cement, crushed aggregate, water, pigment and additives
<b>Using</b>	For retaining walls, partition walls and fences. Terraced slope stabilization, regulation of watercourses and areas, modifications parking lots, parks, construction fences, noise barrier
<b>Description</b>	Stavoblock system consists of blocks that are composed without using mortar and adhesives for advance prepared gravel base. Displacement fittings are "locked" by dovetail locks. Visual elements can be combined to create a wall coated with split, smooth or combination.

## Technical and building size garden system Stavoblock

Material: colour concrete

Visual modification: split, smooth

Strength in compression for ČSN ISO 4012: 19,78 MPa (Form.Elem.)

Strength in compression for ČSN ISO 4012: 7,5 MPa (Anchor.Elem.)

Frost proof for dle ČSN 731322: T25

Absorptive from ČSN 731316: 4-5%

Density: 2100 kg/m<sup>3</sup>

Montage: nomortar technology

Laying: manually

### Colours:

White, sand, light gray, colorado, anthracite

### Unites of system:

Stavoblock Jumbo, Flat, Standard, Pony, Angled Element, Angled Coupler, Continuous Covering Panel, Covering Panel, Pillar Covering Plate, Double Join Rod 200, Double Join Rod 100, T-Coupler, Corner-Coupler, Long Coupler, Short Coupler





## Retaining and fence system Stavoblock - accessories

### Stavoblock Jumbo ● ● ○



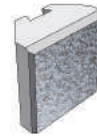
Size: 400x200x100 mm (lxhxt)  
Dimensional tolerance: ± 2,0 mm  
Visual side: split, smooth  
Weight: 15 kg  
Consumption on 1m<sup>2</sup>: 12,5 pcs  
Quantity on pallet: 96 pcs  
Weight pallet with wrapper: 1450 kg

### Stavoblock Flat ● ● ○



Size: 400x100x100 mm (lxhxt)  
Dimensional tolerance: ± 2,0 mm  
Visual side: split, smooth  
Weight: 7 kg  
Consumption on 1m<sup>2</sup>: 25 pcs  
Quantity on pallet: 192 pcs  
Weight pallet with wrapper: 1385 kg

### Stavoblock Standard ● ● ○



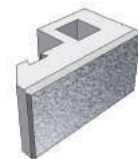
Size: 200x200x100 mm (lxhxt)  
Dimensional tolerance: ± 2,0 mm  
Visual side: split, smooth  
Weight: 6,5 kg  
Consumption on 1m<sup>2</sup>: 25 pcs  
Quantity on pallet: 192 pcs  
Weight pallet with wrapper: 1270 kg

### Stavoblock Pony ● ● ○



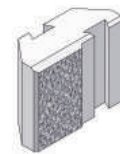
Size: 200x100x100 mm (lxhxt)  
Dimensional tolerance: ± 2,0 mm  
Visual side: split, smooth  
Weight: 3,4 kg  
Consumption on 1m<sup>2</sup>: 50 pcs  
Quantity on pallet: 384 pcs  
Weight pallet with wrapper: 1325 kg

### Angled Element ● ○



Size: 400x200x100 mm (lxhxt)  
Dimensional tolerance: ± 2,0 mm  
Visual side: split, smooth  
Weight: 20 kg  
Consumption on 1m<sup>2</sup>: 5 pcs  
Quantity on pallet  
32 (left) + 32 (right)  
Weight pallet with wrapper: 1300 kg

### Angled Coupler ○



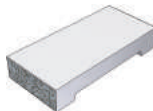
Size: 250x100x200 mm (lxhxt)  
Dimensional tolerance: ± 2,0 mm  
Visual side: split, smooth  
Weight: 8,5 kg  
Consumption on 1bm: 10 pcs  
Quantity on pallet  
40 (left) + 40 (right)  
Weight pallet with wrapper: 700 kg

### Continuous Covering Panel ●



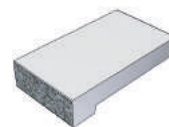
Size: 200x300x75 mm (lxhxt)  
Dimensional tolerance: ± 2,0 mm  
Visual side: split, smooth, ground  
Weight: 10 kg - smooth  
7 kg - split, ground  
Consumption on 1 bm: 5 pcs  
Quantity on pallet: 48 pcs  
Weight pallet with wrapper: 356 kg

### Continuous Covering Panel ●



Size: 200x470x75 mm (lxhxt)  
Dimensional tolerance: ± 2,0 mm  
Visual side: smooth  
Weight: 16,4 kg  
Consumption on 1 bm: 5 pcs  
Quantity on pallet: 24 pcs  
Weight pallet with wrapper: 404 kg

### Covering Panel ○



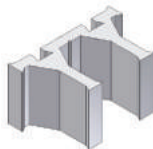
Size: 200x300x75 mm (lxhxt)  
Dimensional tolerance: ± 2,0 mm  
Visual side: split, ground  
Weight: 9 kg  
Consumption on 1 bm: 5 pcs  
Quantity on pallet: 48 pcs  
Weight pallet with wrapper: 356 kg

### Pillar Covering Plate ●



Size: 500x500x70 mm (lxhxt)  
Dimensional tolerance: ± 2,0 mm  
Visual side: smooth  
Weight: 25 kg  
Consumption : 1 pcs  
Quantity on pallet: 2 pcs  
Weight pallet with wrapper: 70 kg

### Double Join Rod ● ○



Size: 392x247x200 mm (lxhxt)  
Dimensional tolerance: ± 2,0 mm  
Visual side: smooth  
Weight: 15,5 kg  
Consumption on 1m<sup>2</sup>: 12,5 pcs  
Quantity on pallet: 108 pcs  
Weight pallet with wrapper: 1674 kg

### T-Coupler ● ○



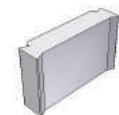
Size: 100x146x200 mm (lxhxt)  
Dimensional tolerance: ± 2,0 mm  
Visual side: smooth  
Weight: 3,1 kg

### T-Coupler ●



Size: 140x125x150 mm (lxhxt)  
Dimensional tolerance: ± 2,0 mm  
Visual side: smooth  
Weight: 3 kg

### Long Coupler ●



Size: 58x245x150 mm (lxhxt)  
Dimensional tolerance: ± 2,0 mm  
Visual side: smooth  
Weight: 2,7 kg

### Short coupler ●



Size.: 58x40x150  
Tol.: ± 2,0 mm  
Visu.: smooth  
Weig.: 0,6 kg

### Corner peg ● ● ○



Size.: 40x40x150  
Tol.: ± 2,0 mm  
Visu.: smooth  
Weig.: 1,4 kg